



STAINLESS STEEL

150 LBS SCREWED FITTINGS

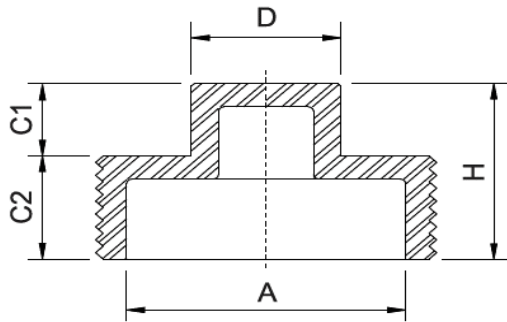
BSPP (ISO 228-1), BSPT (ISO 7-1), NPT THREAD

DIMENSION CONFORM TO ASME B16.3 AND ANSI/MSS SP-114-2018 WHERE APPLICABLE

MATERIAL CONFORM TO ASTM A351 GR. CF8 & CF8M

PRESSURE-TEMPERATURE RATINGS 300 PSI (-29 TO 66°C)

MADE BY LOST WAX INVESTMENT CASTING



SQUARE PLUG

SIZE	A	D	C1	C2	H	Weight
	(inch)	(mm)	(mm)	(mm)	(mm)	(Kg/Pc)
1/8"	-	7.0	7.0	11.0	18.0	0.014
1/4"	-	8.0	7.7	11.5	19.2	0.020
3/8"	-	9.8	7.7	12.0	19.7	0.030
1/2"	14.5	13.2	8.0	14.5	22.5	0.030
3/4"	19.5	16.0	11.0	15.5	26.5	0.050
1"	24.7	18.0	9.5	19.5	29.0	0.074
1 1/4"	32.6	19.0	12.8	20.2	33.0	0.117
1 1/2"	38.5	24.0	13.5	21.0	34.5	0.150
2"	50.5	27.0	15.5	22.5	38.0	0.220
2 1/2"	64.5	39.0	19.5	27.0	46.5	0.400
3"	76.5	44.0	19.8	27.2	47.0	0.500
4"	102.0	57.7	21.7	30.0	51.7	0.853